



Family-Owned. World-Renowned.

Construction Brochure 2024

www.AMISTADMEXICO.com

"Amistad was a cost-effective and quick way in producing our products in Mexico. Amistad impressed us with their detail knowledge of local business environment and the ability to establish our company in a short period of time. I strongly recommend Amistad Industrial Developers as a resource to be utilized as you are looking to set up in Mexico."



— Chunyong Zheng,
General Manager



AMISTAD CONSTRUCTION

Explore the boundless possibilities of Mexico's vibrant business landscape with AMISTAD Construction. As a key player in Mexico's thriving construction industry for over four decades, we have been instrumental in helping global companies establish sustainable growth in Mexico.

Our full-service construction expertise integrates Environmental, Social, and Governance (ESG) principles into every project, ensuring your success aligns with broader corporate visions.

AMISTAD PROMISE

Commitment to Service, Reliability, and Quality.

OUR VISION

To be the preferred supplier for our clients through constant recognition as one of top tier developers in Mexico. To be recognized for supporting the communities in which we develop our facilities.

OUR MISSION

Operate as a Family business, meeting the expectations of our customers through quality products and services at a competitive price in preferred locations.



Jesus Maria Ramon
Founder



OUR HISTORY

Since 1978, we've been a key player in shaping industrial projects in Mexico. Starting with the vision of Don Jesus Maria Ramon, we've strategically adapted to the changing landscape of global manufacturing.

Today, we proudly stand as a pioneer in industrial development, unwavering in our commitment to excellence and meeting diverse client needs.

As a resilient, family-owned business, AMISTAD operates with four divisions, serving various international manufacturing and distribution needs.

Throughout our journey, one principle guides us—the AMISTAD promise:

*Commitment to
Service, Reliability, and Quality.*

“

My team and I had the pleasure of working with Amistad over the last 18 months to set up our industrial footprint into Mexico. Throughout the course of construction, Amistad employees displayed a high level of professionalism, experience, dedication, and commitment to quality.

A Our experience with this outstanding group of professionals has exceeded our expectation and leaves me confident that they do the same for you. I highly recommend Amistad to anyone who is looking for a partner to design and build a world class manufacturing facility in Mexico.

IKANO

*-Sebastian Luczynski
CEO, Ikano Industry*

”

45+

YEARS OF PREMIER
CONSTRUCTION EXPERTISE

180+

CLIENTS WORLDWIDE

35M+

SQ. FT. OF INDUSTRIAL
SPACE BUILT



WHY CHOOSE US

12M+

SQ. FT. OF INDUSTRIAL
SPACE LEASED

72%

REPEAT CLIENTELE

17

INDUSTRIAL PARKS
THROUGHOUT MEXICO

OUR ASSOCIATIONS



**EMPRESA
SOCIALMENTE
RESPONSABLE**



index



ampip

MEXICAN ASSOCIATION OF INDUSTRIAL PARKS



CÁMARA DE COMERCIO Y
TECNOLOGÍA MÉXICO CHINA
墨西哥中国商业科技商会
CHINA CHAMBER OF COMMERCE
AND TECHNOLOGY MEXICO



**AMERICAN CHAMBER
MEXICO**



AHK

Deutsch-Mexikanische
Industrie- und Handelskammer
Cámara Mexicano-Alemana
de Comercio e Industria | CAMEXA





BUILDING EXCELLENCE
NATIONWIDE



Tilt-up



Pre-Cast



FULL SERVICE CONSTRUCTION OFFERS:

- ✓ In-House Architects
- ✓ Site Adaptation (Greenfields)
- ✓ Value Engineering Projects
- ✓ Initial Cost Estimates
- ✓ Design-Build Capability
- ✓ Complete Designs in 3D Modeling
- ✓ Rendering Options for Client Selection
- ✓ Regional Offices
- ✓ Vast Experiences in Turn-Key BTS Projects
- ✓ Fast Track Construction timeline (Typical 10 - 12 Mo.)
- ✓ Established Partnerships with Specialized Fields
- ✓ Risk Management – Insurances, Bonds, etc.
- ✓ Commitment to Safety
- ✓ Hands-On Management

OUR RECENT CLIENTS





Ramos Arizpe, Coah.



Ramos Arizpe, Coah.



Celaya, Gto.



Celaya, Gto.



Durango, Dgo.



Ramos Arizpe, Coah.



Celaya, Gto.



Queretaro, Gro.

PROJECT PORTFOLIO

“Amistad is commendable and a high-caliber, world-class provider. I recommend Amistad Group for their high standards in meeting and exceeding expectations.”

— Armando Valdez Valdez
General Manager

LAZBOY





IKANO

LOCATION: Amistad Chuy Maria Industrial Park
Ramos Arizpe, Coahuila

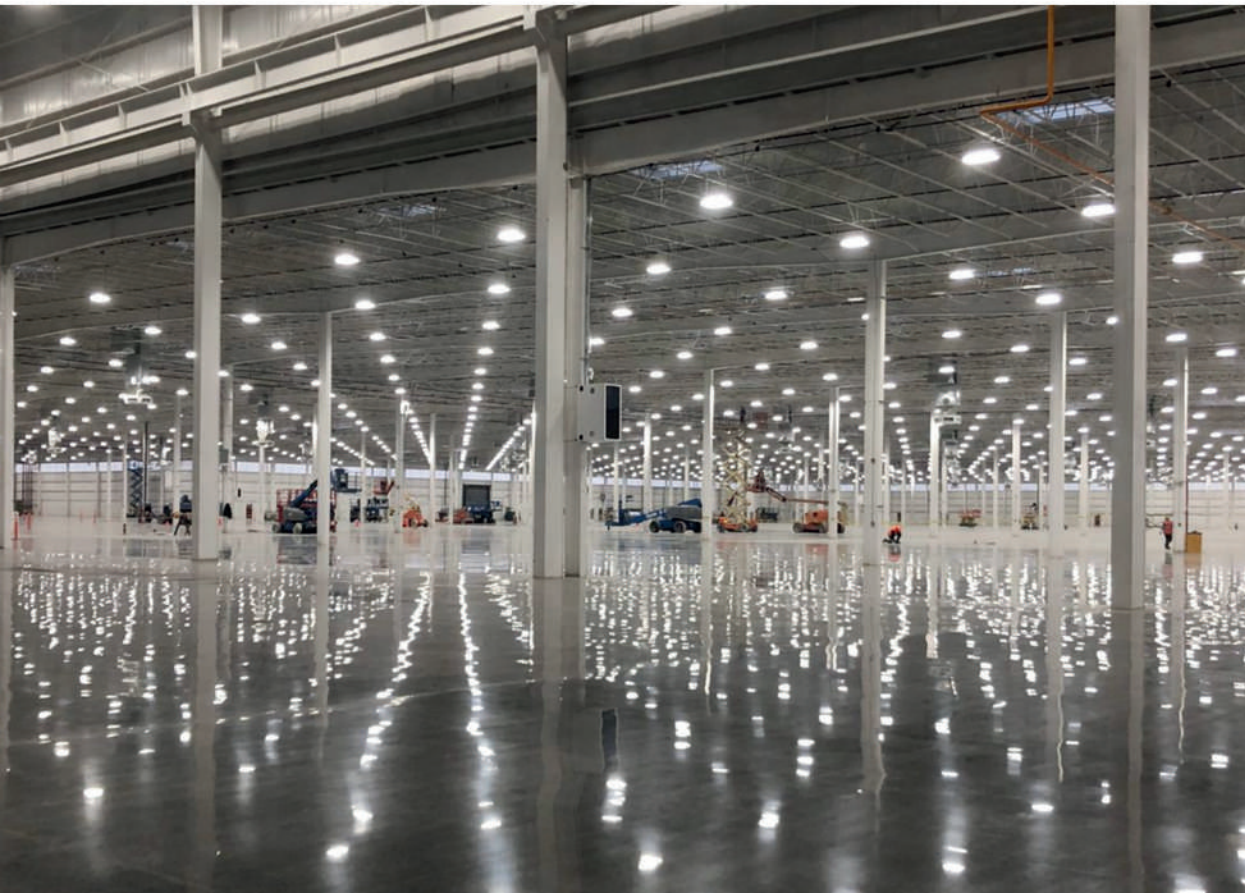
TOTAL AREA: 1.2 Million SQ FT / 111,484 SQ M

YEAR BUILT: 2021

INDUSTRY: Furniture

DETAILS: First production facility in Mexico.
Largest one roof building and LEED
Gold Certified.





LOCATION: Amistad Airport Industrial Park
Ramos Arizpe, Coahuila

TOTAL AREA: 934,898 SQ FT / 86,855 SQ M

YEAR BUILT: 2021

INDUSTRY: HVAC Manufacturing

DETAILS: Amistad has built several buildings
totaling 1.6 million sq ft.



SKYJACK™

LOCATION: Amistad Chuy Maria Industrial Park
Ramos Arizpe, Coahuila

TOTAL AREA: 690,000 SQ FT / 64,104 SQ M

YEAR BUILT: 2023

INDUSTRY: Telehandlers / Equipment

DETAILS: Two-phase facilities expansion project located in new industrial park with highway connectivity.





LENNOX INTERNATIONAL

LOCATION: Amistad Chuy Maria Industrial Park
Ramos Arizpe, Coahuila

TOTAL AREA: 818,755 SQ FT / 76,065 SQ M

YEAR BUILT: To be completed in 2024

INDUSTRY: HVAC Manufacturing

DETAILS: 4th plant built with Amistad, totaling
2 million sq. ft. in different facilities.



Mubea

LOCATION: Amistad Chuy Maria Industrial Park
Apaseo el Grande, Guanajuato

TOTAL AREA: 168,585 SQ FT / 15,663 SQ M

YEAR BUILT: 2018

INDUSTRY: Automotive

DETAILS: Amistad's 4th project with Mubea, executed in North and Central Mexico, meets highly specialized building requirements.





Milwaukee®

LOCATION: Torreón, Coahuila

TOTAL AREA: 285,000 SQ FT / 26,478 SQ M

YEAR BUILT: 2020

INDUSTRY: Power Tools

DETAILS: Milwaukee's first operation in Mexico, strategically located to enhance logistics and distribution.



LOCATION: Amistad Industrial Park
Acuña, Coahuila

TOTAL AREA: 184,505 SQ FT / 17,142 SQ M

YEAR BUILT: To be completed 1st Qtr 2024

INDUSTRY: Heavy Truck

DETAILS: Constructing specialized buildings for Bendix since 1984, with building designs intended for replication worldwide.





LOCATION: Amistad Piedras Negras Sur Industrial Park
Piedras Negras, Coahuila

TOTAL AREA: 157,660 SQ FT / 14,648 SQ M

YEAR BUILT: Completed in 2023

INDUSTRY: Heavy Truck

DETAILS: SAF Holland's second operation in Mexico specializing in Holland fifth wheels, strategically located on the border for logistics.



INDUSTRIAL REAL ESTATE • CONSTRUCTION

Family-Owned. World-Renowned.

Mexico Border/Corporate Office

Hidalgo #900 PTE.
Zona Centro
Cd. Acuña, Coahuila CP 26200
800-849-7909
877-772-6363

Madero #795
Zona Centro
Cd. Acuña, Coahuila CP 26200
877-772-6888
877-772-6089

Northern Mexico

Bldv. Luis Echeverria #443
Torrelite Piso 7
Saltillo, Coahuila CP 25265
844-439-1910
844-439-1920

Bldv. Galerias 381,
Torre Edden Piso 3
Fracc. Parque Centro
Saltillo, Coah. 25279
844-415-8005
844-416-1684

United States

807 Veteran's Blvd. Suite B #600
Del Rio, Texas 78840
800-994-9596
830-775-5380

Japan

Urbannet Nihonbashi
2-chome Building 10th floor
1-3 Nihonbashi 2-chome
Chuo-ku Tokyo 103-0027
81-50-5358-0579

Central Mexico

Ave. Torres Landa #204
Segundo Piso Int. B
Col. Del Parque
Celaya, Guanajuato CP 38010
461-608-8940
461-216-1170

USA 800-994-9596
WWW.AMISTADMEXICO.COM



MEXICO 800-849-7909
INFO@AMISTADMEXICO.COM