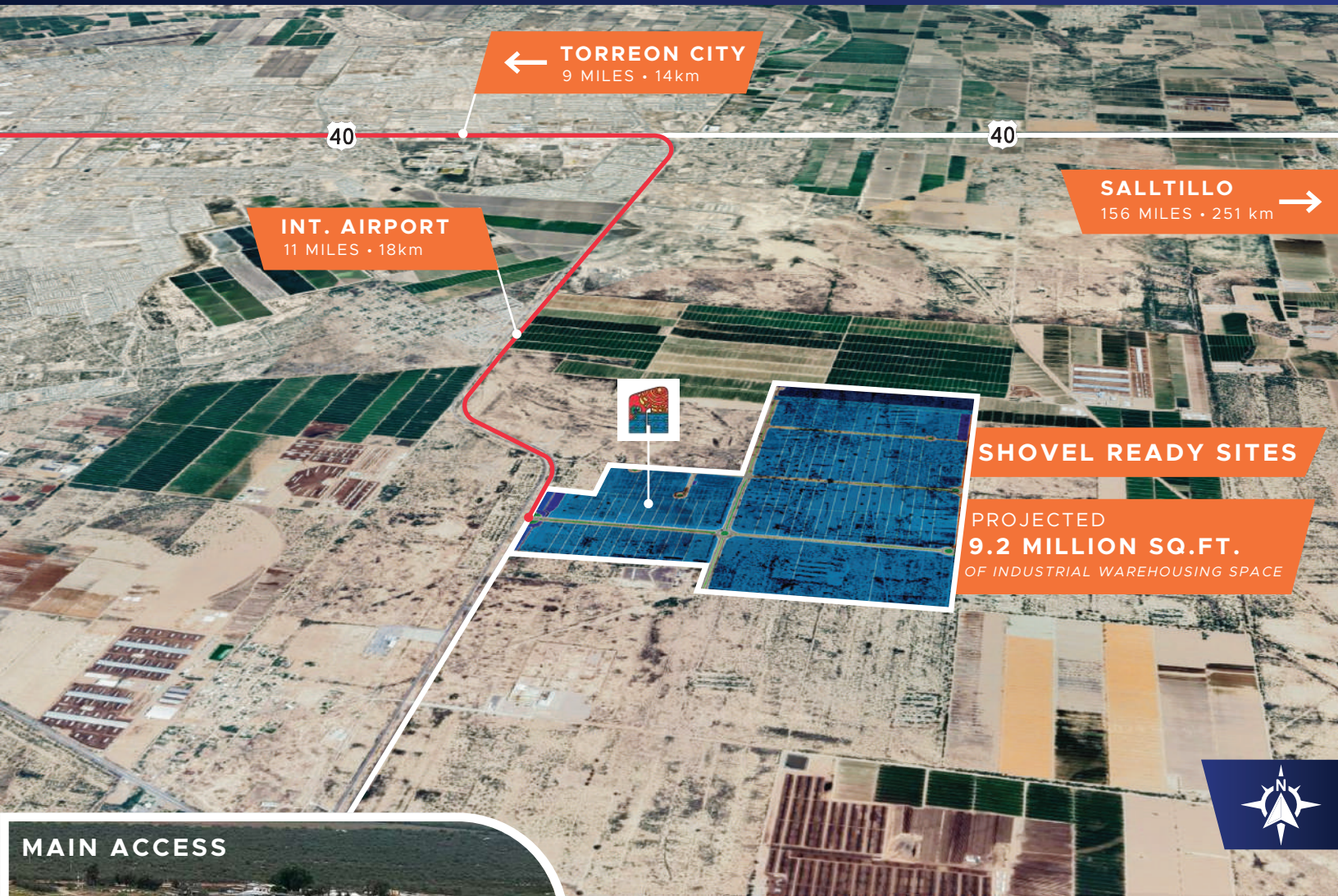


## AMISTAD LAGUNA INDUSTRIAL PARK LOCATED IN TORREON, MEXICO



← **TORREON CITY**  
9 MILES • 14km

**INT. AIRPORT**  
11 MILES • 18km

**SALLTILLO** →  
156 MILES • 251 km

**SHOVEL READY SITES**

PROJECTED  
**9.2 MILLION SQ.FT.**  
OF INDUSTRIAL WAREHOUSING SPACE

### MAIN ACCESS



### UTILITIES



**Electric Power**  
40MVA  
(Phase I)



**Water Sources**  
24Lts/Sec Water Well  
6Lts/Sec water well



**Telecommunications**  
Telephone & Data Optical Fiber



**Water Treatment**  
On site 3Lts/Sec  
(Phase I)



**Natural Gas**  
Natural Gas Available  
Upon Request



**Security**  
24 hour security

# 263 Hectares 650 Acres

## AMISTAD LAGUNA INDUSTRIAL PARK LOCATED IN TORREON, MEXICO



### Distance from Amistad Laguna Industrial Park

#### Saltillo

251km • 156 miles

#### Monterrey

332km • 207 miles

#### Piedras Negras - Texas Border

601 km • 374 miles

#### Nuevo Laredo - Texas Border

546km • 339 miles

### Mexico's INDUSTRIAL DEVELOPMENT SPECIALIST

**45+**

Years of  
Experience

**35+**

Million  
Square Feet Built

**12+**

Million  
Square Feet Leased

**180+**

Clients

**17**

Industrial Parks  
In Mexico

